



FELLOWSHIP OF CHRISTIAN FARMERS
INTERNATIONAL



*Who will help the farmer...
when disaster strikes?*

Who will help the farmer...

when disaster strikes?



Dear Ministry Partner,

In the United States, ministry takes many forms. Ministry that is long lasting and intentional has to come from the heart and take the form of demonstrating the love of Christ through service to others. The Fellowship of Christian Farmers, International (FCFI) has been involved in rural disaster relief since its beginning in 1985. Neighbor helping neighbor, in time of need, is a hallmark of FCFI and a farm community tradition.

Since Hurricane Rita in 2005, and more recently the EF-4 tornadoes that ravaged Illinois, Indiana, Kentucky and Tennessee in spring of 2012, and the wildfires that devastated Oklahoma/Montana in the summer of 2012, FCFI has had multiple opportunities to demonstrate the love of Christ. FCFI has mobilized volunteers from across the country for extended lengths of time as well as deployed our mobile living quarters, shower/laundry trailer and assorted 4-wheel vehicles and equipment to help get our neighbors back on their feet.

FCFI is not a first responder when disaster strikes. Organizations like FEMA and Samaritan's Purse move in to stabilize the affected area first. However, because of their charter, they do not extend beyond the corporate limits of the communities involved. FCFI is the only organization that moves into the rural community and lends a hand. Because of the limited number of our response equipment, we are only able to assist one community at a time. Our resources are growing older and need to be repaired or replaced. Our technology is out of date and our facilities for managing these responses are scattered among various donated and rented buildings across the Midwest.

In the following pages, we highlight the opportunities we have had in the recent past to show the love of Christ to our neighbors. Will you please pray that we meet our goal and about how you might support this dream? After all, who will help the farmer when disaster strikes?

Sincerely,

Dennis Schlagel
Executive Director FCFI

Disaster Recovery Expansion Plan (Rapid Response)



FELLOWSHIP OF CHRISTIAN FARMERS
INTERNATIONAL

EF-4 tornadoes that ravaged Illinois, Indiana, Kentucky, and Tennessee

Tornado struck the farming community on March 2, 2012. A path ½ mile wide and 56 miles long was devastated by this disaster. FCFI volunteers began helping in early March and remained on site until mid August 2012



Reconstruction activities included:

- fence line rebuilding
- reconstructing of farm buildings
- cleaning up farm fields for harvest
- shower and laundry facilities provided by FCFI for volunteers

Storm Surge Hits Southwest Louisiana

Storm surge from Hurricane Rita in September 2005 along the southwest coast of Louisiana. Twenty miles inland and 100 miles east and west of Lake Charles was devastated by the disaster. FEMA, the Mennonite, and Methodist relief efforts helped the municipalities, however, no assistance was offered to the rural community. Volunteers from FCFI started in January 2006 and remained on site until April 2007



Reconstruction activities included:

- fence line rebuilding
- reconstructing of farm buildings
- cleaning up farm fields for grazing
- mobile housing, shower, and laundry facilities provided by FCFI for volunteers



FELLOWSHIP OF CHRISTIAN FARMERS
INTERNATIONAL

Wildfires Struck Amarillo, TX

Wildfires struck rural Hutchinson County, TX on March 13, 2006. 400,000 acres of land was devastated by this disaster. TX department of Ag. assisted in re-establishing perimeter fencing: FCFI responded to farm/ranch needs. Volunteers from FCFI started on March 2006 and remained on site until September 2006.



Reconstruction activities included:

- fence line rebuilding
- reconstructing of farm buildings
- cleaning up farm fields for grazing
- Due to distance from central IL, no facilities provided, FCFI volunteers were housed in local facilities



FELLOWSHIP OF CHRISTIAN FARMERS
INTERNATIONAL



Rapid Response:

The vision for tomorrow!

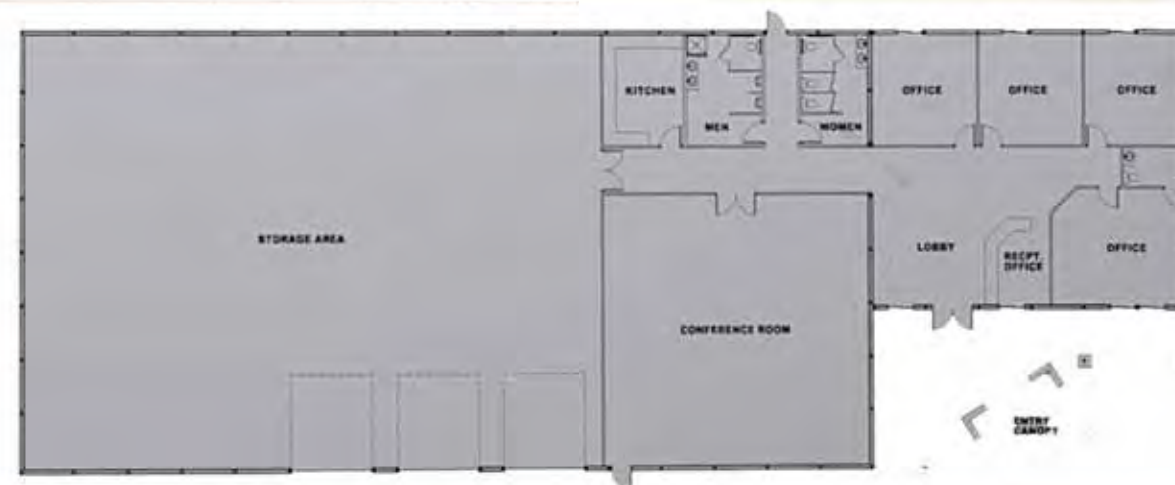
Our Needs

- Regional disaster directors (10-12)
 - Volunteers in North America and New Zealand
 - Equipment
 - Custom built mobile bunk house to sleep 12-15 volunteers on site (\$25,000.00)
 - Additional shower/laundry trailer with maintenance feature for on site repair fabrication (\$30,000.00)
 - Skid-steer tractor with brush clearing and post hole digging attachments (\$40,000.00)
 - "Dualie" pickup truck to pull trailers and haul volunteers (\$50,000.00)
- TOTAL: \$145,000**

- Facility to house the home office and maintenance facility
 - Building - \$250,000.00
 - Land - \$150,000.00
 - Outfitting - \$100,000.00
- TOTAL: \$500,000**

- Technology
 - Current technology computer and server (\$5,500.00)
 - Enhanced Website (\$9,800.00)
- TOTAL: \$15,300**

**TOTAL ALL ENHANCEMENTS
\$660,300**





FELLOWSHIP OF CHRISTIAN FARMERS
INTERNATIONAL

Rapid Response – today

Equipment

- Motor coach (built 2001)
- Shower Trailer (built 2010)
- Laundry trailer (in the shower trailer)
- Kubota
- Various hand tools
- Chevy van (2006, 217,000 miles)
- Belltec posthole digger (2008)
- Storage & maintenance of equipment scattered throughout central IL, both indoor and outside storage, no dedicated maintenance location
- Central offices, downtown Lexington, IL Storefront (rented)



Melvin Bell & John Adams volunteer directors

Volunteers – farmers in all parts of the United States

Technology

- Computers & Server (apprx. 2002)
- Website (apprx. 2002)



Who will help the farmer...

The Fellowship of Christian Farmers, Intl. (FCFI) has been very blessed to have our current home office since 1994. However, with the growth of the membership, expanding needs of the Rapid Action activities and advancements in technology, we are currently outgrowing our present ministry tools. Our prayer is to update our equipment (both electronic and disaster related) and acquire a permanent home office that would include storage, repair/fabrication, and meeting space for the future of the Fellowship.

Please prayerfully consider how you will help the farmers!



when disaster strikes?



Will You?



*F*ELLOWSHIP OF *C*HRISTIAN *F*ARMERS
I N T E R N A T I O N A L

PO Box 15
Lexington, IL 61753
309-365-8710
www.fcfi.org